

US Retail Price List

Account Information

Date Account Number

Account Name Contact Name

Phone Fax

Email Address

PO Number Mark For

[] Quote

Ship To Information

Name

Address

City State Zip

Phone



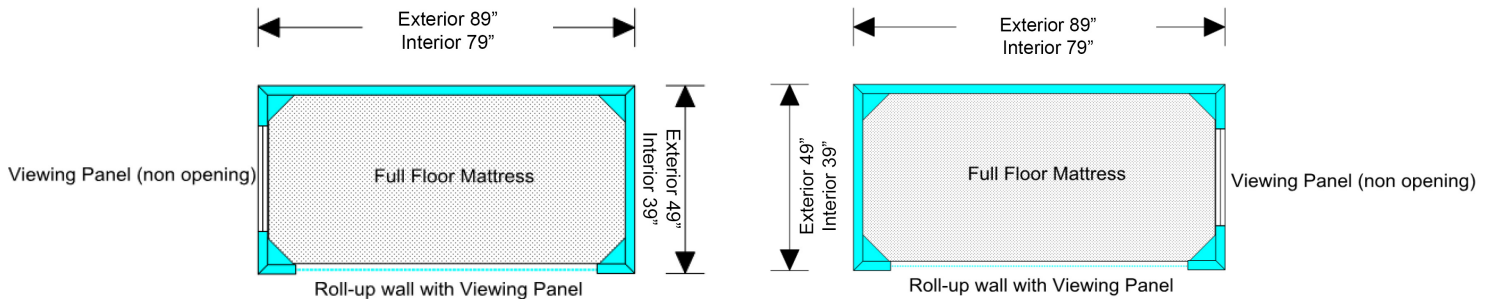
**Optional mattress and white rear wall shown above

Standard Configuration Includes

- Large standard roll up wall & viewing panel
- Non-opening viewing panel (right or left)
- Super soft padded floor
- Water resistant floor seams

Each Safespace requires the completion of a design package to ensure accurate selection and configuration. This retail pricing sheet can be used for funding and quoting purposes. 10 pre-designed packages are available below. Build your own custom pricing is available on page 4, however it is recommended that a design package be completed and a quotation provided before this retail order form is utilized for prior authorization purposes. Please contact sales@adaptiveimports.com to request a design package and discuss individual specifications. E1399**

Pre-Configured Packages:



Full Floor Mattress, "Twin" sized Safespace configuration. Single roll up wall with viewing panel and non opening viewing panel on the right or left. An approximately twin sized, memory foam mattress with black lycra cover in addition to the floor padding is provided in this configuration. Zip End Cover, Water Resistant floor seams, Lt. blue walls, white mesh ceiling, dark blue floor. Exterior Size: 89" x 49", Interior Size: 79" x 39"

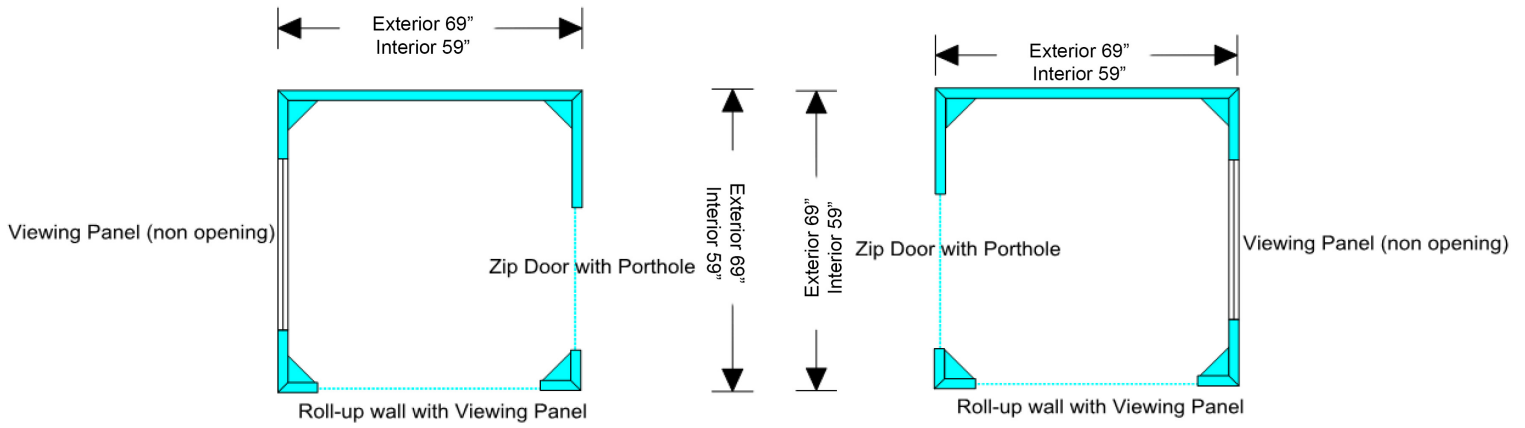
AI 1L \$27,908

AI 1R \$27,908

Continued on Next Page

**It is the responsibility of the CRT provider to determine the HCPCS code most appropriate for each circumstance. The HCPCS codes for reference only and are not to be deemed as legal advice. Actual coding and coverage varies by funding entities and the use of HCPCS does not guarantee coverage or payment.

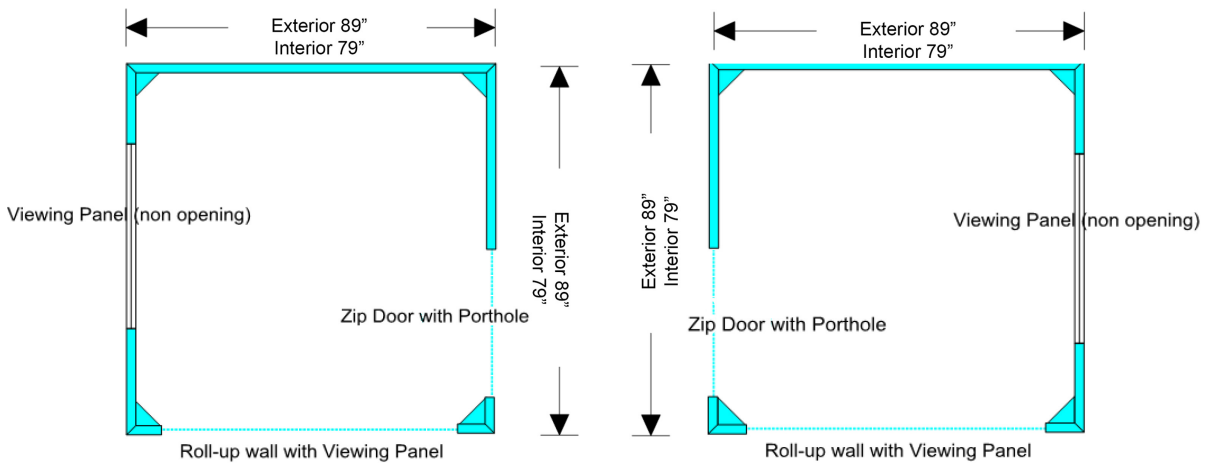




Large roll up wall with viewing panel and non-opening viewing panel on the right or left. Single zip door with porthole shaped window opposite non-opening viewing panel. Padded floor, Zip End Covers, Water Resistant Floor Seams, Lt. Blue walls, White Mesh Ceiling, Dark Blue Floor. Exterior Size: 69" x 69", Interior Size: 59" x 59"
 **This size Safespace is not compatible with any mattresses due to interior size.

AI 2LA \$28,190

AI 2RA \$28,190



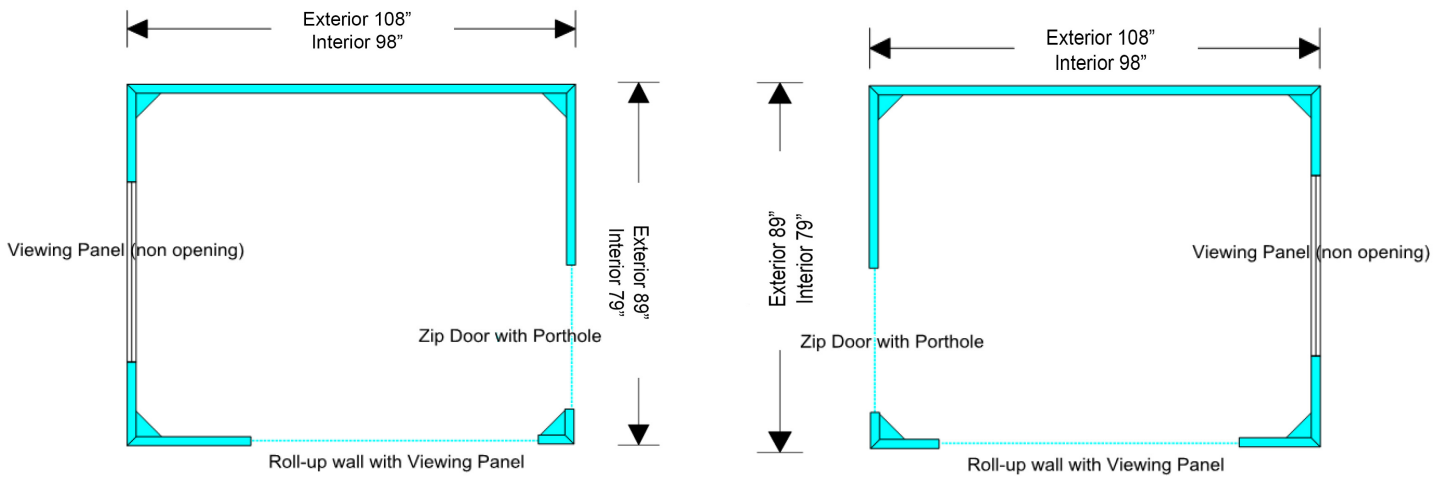
Large roll up wall with viewing panel and non-opening viewing panel on the right or left. Single zip door with porthole shaped window opposite non-opening viewing panel. Padded floor, Zip End Covers, Water Resistant Floor Seams, Lt. Blue walls, White Mesh Ceiling, Dark Blue Floor. Exterior Size: 89" x 89", Interior Size: 79" x 79"

AI 2LB \$28,190

AI 2RB \$28,190

Continued on Next Page

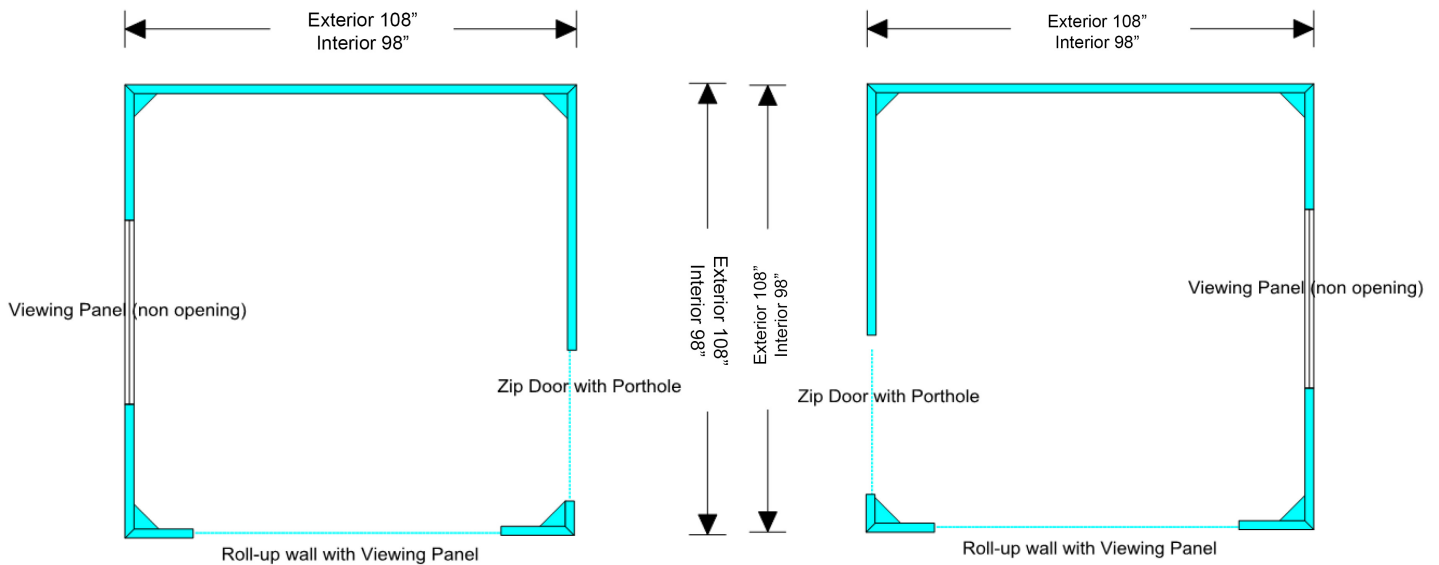




Large roll up wall with viewing panel and non opening viewing panel on the right or left. Single zip door with porthole shaped window opposite non-opening viewing panel. Padded floor. Zip End Covers, Water Resistant Floor Seams, Lt. Blue walls, White Mesh Ceiling, Dark Blue Floor. Exterior Size: 108" x 89", Interior Size: 98" x 79"

AI 3L \$30,883

AI 3R \$30,883



Large roll up wall with viewing panel and non opening viewing panel on the right or left. Single zip door with porthole shaped window opposite non-opening viewing panel. Padded floor. Zip End Covers, Water Resistant Floor Seams, Lt. Blue walls, White Mesh Ceiling, Dark Blue Floor. Exterior Size: 108" x 108", Interior Size: 98" x 98"

AI 4L \$33,824

AI 4R \$33,824

Mattress Options for AI 2 - AI 4 packages:

AI 33	Standard Foam Fitted Mattress - Dark Blue PVC Cover - Single Size	\$2,098
AI 34	Standard Foam Fitted Mattress - Dark Blue PVC Cover - Double Size	\$2,823
AI 35	Memory Foam Fitted Mattress - Lycra Cover - Single Size	\$2,569
AI 36	Memory Foam Fitted Mattress - Lycra Cover - Double Size	\$3,294

Continued on Next Page



Design your own Safespace:

We know that you may have special size or design considerations that exceed the basic parameters of the pre-configured Safespace offered. Please contact sales@adaptiveimports.com to request a design package. You can use the basic retail pricing sheet below, however, it is strongly recommended that a quotation be requested before funding authorization is pursued. Unit pricing is determined by the size and options selected.

AI 1	Safespace up to 89" x 49" (Exterior). 3" padded floor, one zippered opening (either roll-up wall or door) and one window (either viewing panel non-opening or zip window)	\$25,221
AI 2	Safespace up to 89" x 89" (Exterior). 3" padded floor, one zippered opening (either roll-up wall or door) and one window (either viewing panel non-opening or zip window)	\$27,013
AI 3	Safespace up to 108" x 89" (Exterior). 3" padded floor, one zippered opening (either roll-up wall or door) and one window (either viewing panel non-opening or zip window)	\$29,705
AI 4	Safespace up to 108" x 108" (Exterior). 3" Padded floor, one zippered opening (either roll-up wall or door) and one window (either viewing panel non-opening or zip window)	\$32,708

* All Safespace configurations above include water resistant floor seams

Customizable Option

AI 6	Removable window blind	\$306
AI 7	Visual Deterrent Panel	\$825
AI 8	Ceiling Visual Deterrent Panel	\$1,414
AI 13	Water Resistant Wall Seams (in addition to floor)	\$905
AI 14	Additional Viewing Panel (Non-zip window)	\$706
AI 15	Additional Voyager shaped viewing panel (Circle or Triangle)	\$565
AI 16	Additional Zip Window	\$1,131
AI 17	Additional netting (4") under window	No Charge
AI 18	Additional zip door with porthole shaped window	\$943
AI 19	Additional roll-up wall	\$1,131
AI 20	Zip end covers (prevents occupant from opening from inside)	\$118
AI 21	Fiber optic zip access	\$235
AI 22	Wall spacer brackets - set of 4	\$943
AI 93	Ballpool barrier up to 2m length (or 1 x 1 corner)	\$2,588
	WALL PAD Custom exterior wall pad when minimum wall clearance is not possible	RFQ
AI 107	Velcro Floor Attaching System	\$674
AI 14	Ceiling window for projector & white rear wall (Projector not provided and to be wall/floor mounted)	RFQ

Mattress Options

AI 33	Standard Foam Fitted Mattress w PVC Cover Single Size	\$2,098
AI 34	Standard Foam Fitted Mattress w PVC Cover Double Size	\$2,823
AI 35	Memory Foam Fitted Mattress w Lycra Cover Single Size	\$2,569
AI 36	Memory Foam Fitted Mattress w Lycra Cover Double Size	\$3,294



COLORS (All colors are approximate, variations to be expected)

Wall Color (Req)

- Light Blue
- Light Pink
- Gray
- Lilac
- Light Green
- Sand
- Cream
- Aqua

Floor Color (Req)

- Dark Blue
- Fuchsia
- Plum
- Dark Green

PVC Mattress Color (Optional)

- Dark Blue
- Fuchsia
- Plum
- Dark Green

*If selecting Lycra Mattress Upgrade, this is the bottom 1/2 color.

Lycra Mattress Color (Optional)

- Black

*This is the top 1/2 color. Bottom 1/2 is PVC Mattress Color selected left.
NOT SUITABLE FOR USERS WHO HAVE BITING/CHEWING BEHAVIORS.

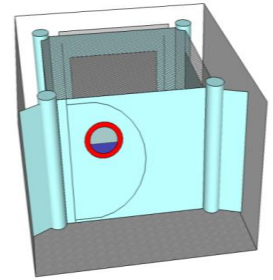
External Corner Color (Optional)

- Light Blue
- Light Pink
- Gray
- Lilac
- Light Green
- Sand
- Cream
- Aqua
- Dark Blue
- Fuchsia
- Plum



Safespace Design Options

1) Safespace Door Options: Choose a Safespace door with (10 in. diameter) porthole shaped window or larger (31 in. x 23in.) **viewing panel**. Doors come with twin zip pullers on the outside of the door with the flat backs of the pullers visible on the inside. Contact us to discuss other options if required.



Standard Door with Porthole

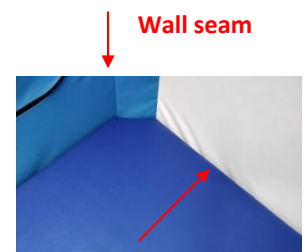
2) Safespace Window Options: On opening windows the zip pullers are on the inside of the Safespace and may need to be secured. Non opening windows have no zip. This would allow the carer to access the room window through the Safespace. Call us if you aren't sure which is the best option to choose.

3) White Wall for Image Projection: A white wall is an excellent background on which to project images. (Sensory equipment pictured sold by outside vendors.)



4) Roll-up Wall: This opens up the side of the Safespace and is useful if you need to access fitted wardrobes through the Safespace. Please note that the zip pullers will be on the inside unless requested otherwise.

5) Water resistant seams: For those with continence issues, we can offer water resistant treatment on the seams where the floor and wall meet - select 'floor', or also on vertical wall seams if continence is a significant issue - select 'floor and wall'.



Floor seam

6) Safespaces PVC covered mattress/Lycra covered Memory foam mattress: Our robust, water resistant, PVC mattress is designed to fit snugly into the mitred bite resistant corners of the Safespace. The memory foam mattress can have a Lycra cover to give the full benefit of the memory foam, or a PVC cover if the user is inclined to bite. (72 in. x 36 in. x 8 in.) or custom size if required.

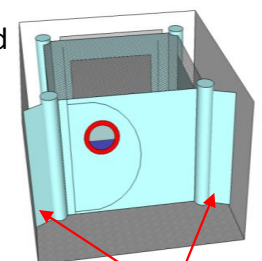


Mattress with Black Lycra Top + Dark Blue PVC Bottom

7) Tube holes: The standard diameter is 1 in. to accommodate most gastronomy or oxygen tubes. Custom sizes are available but should be kept to a minimum for safety.

8) Removable Window Blinds: Window blinds can be attached with Velcro on the outside of the Safespace so that the caregiver has control of their use. They are useful to darken the Safespace room or prevent visual distractions.

9) Visual Deterrent Panels: A 10 in. gap is required between the Safespace walls and any hard surfaces such as walls or a radiator. Visual deterrent panels conceal this gap and are recommended for those who have the ability/inclination to enter the gap around the Safespace. They extend from the corners of the Safespace and are fixed to the wall of the room. They are designed as a visual deterrent only and

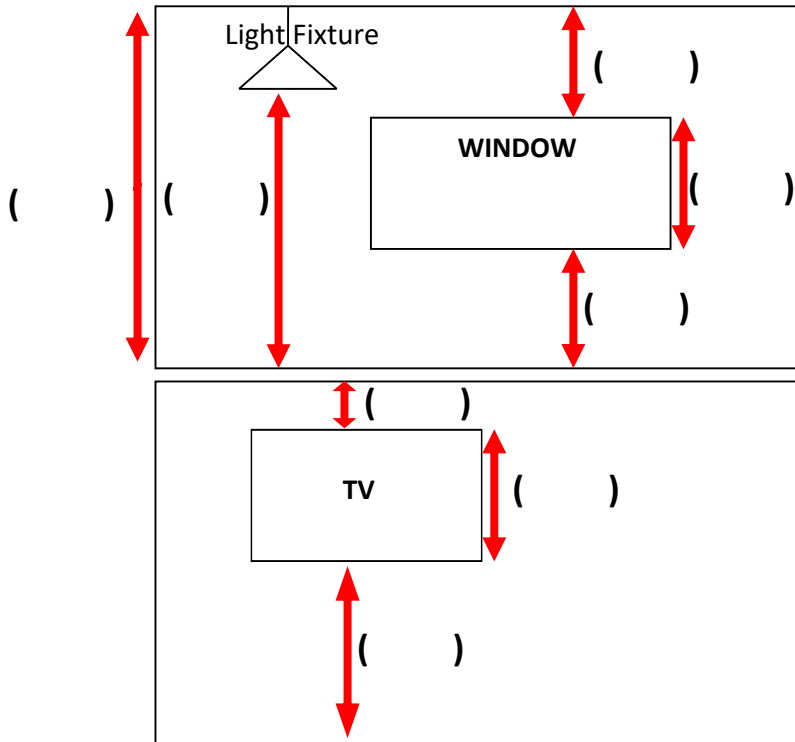


Visual Deterrent Panels

10) Floor /Wall Fixing brackets: If the floor surface is slippery, such as laminate or any non-carpeted surface, we would recommend that the Safespace is fixed to the floor. Where this is not possible due to e.g. underfloor heating, then wall fixing brackets may be required. Floor /wall fixing is recommended on all floor surfaces where the person using the Safespace is very active.

ROOM HEIGHTS

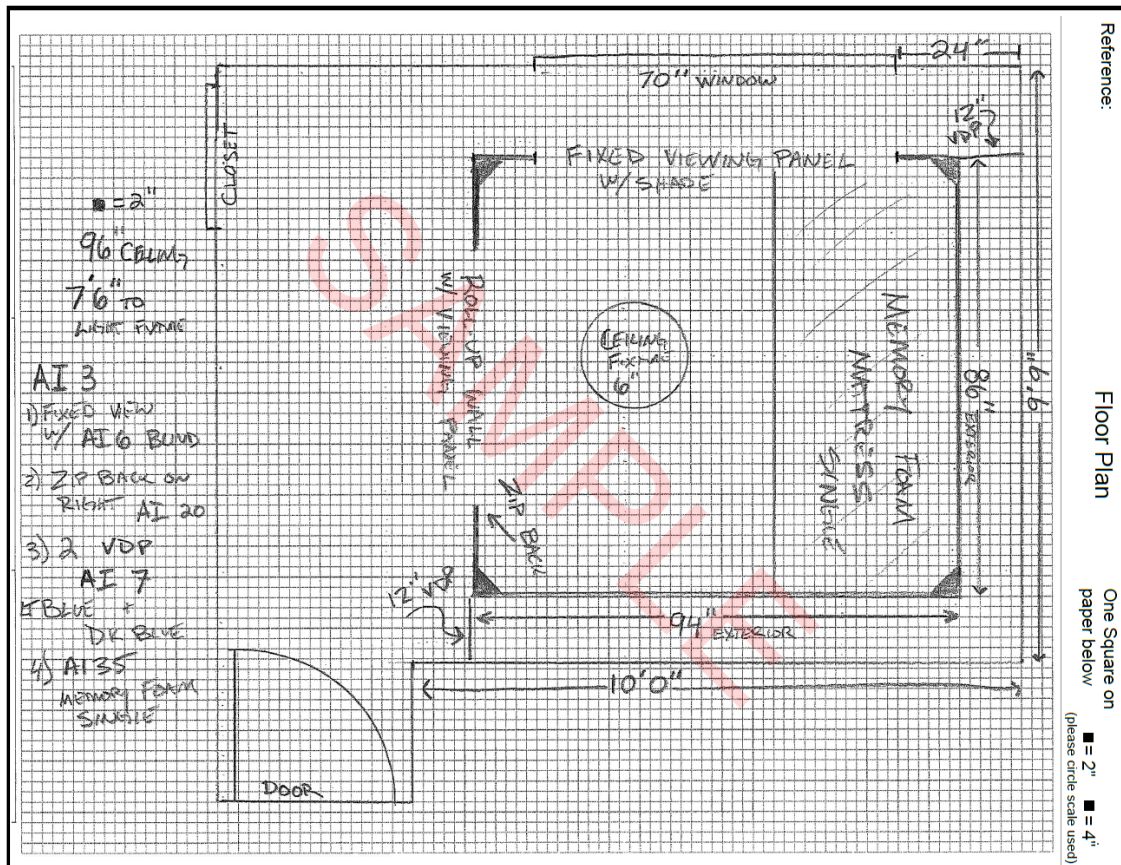
Measure the heights (inches) of the room where the Safespace will be situated and enter the measurements in the brackets. See examples below. Note windows, televisions, light fixtures, etc. Complete as many views as needed.



Complete as many views as needed, or supply additional diagrams or photographs and email to sales@adaptiveimports.com

ROOM PLAN

Using the blank plan on the next page, draw a diagram of the room the Safespace will be assembled in. Mark all doors, closets, furniture such as dressers / beds / tables, windows, mounted televisions, etc. A completed example is shown below. A computer drafted design will be created based on your submission for your review and sign-off.



Reference:

Floor Plan

One Square on paper below ■ = 2" ■ = 4" (please circle scale used)

Reference:

Floor Plan

One Square on
paper below

■ = 2" ■ = 4"
(please circle scale used)

