

Seating

Standing

Sleeping

Therapy

# Standz by Jenx

A versatile standing system offering prone or supine standing that accommodates abducted or neutral leg positioning for children between approximately 1 - 9 years.



## Key features

- Tool free adjustments
- Individual leg abduction and adjustment
- Offers Prone or Supine standing
- Antimicrobial covers to aid infection control in multi-user environments

Age range: 1 to 9 years  
 Max user height prone/supine: 54¼" / 54¼"  
 Max user weight: 99 lbs  
 Individual leg abduction: Neutral to 30°

Always Supportive...

# Standz by Jenx

A versatile standing system offering prone or supine standing that accommodates abducted or neutral leg positioning.

Inspired by the clinical benefits of abducted standing and created alongside therapists and carers all over the world, Standz ensures the perfect combination of clinical positioning with simplicity of use. Standz offers Prone or Supine standing and easily accommodates either abducted or neutral leg positioning for children between the ages of 1-9 years. Leg length discrepancy is easily accommodated by the individual control for knee and foot positioning, and all adjustments are tool free to enable quick and effective clinical postural adjustments. With an extensive range of accessories, Standz can accommodate children with a wide range of postural requirements.

## INNOVATIVE FEATURE

### Tool Free Adjustments

No more hunting for the right sized allen key, cleverly designed wing knobs offer a comfortable grip to enable effective clamping with minimal effort – meaning growth adjustments have never been easier.

## INNOVATIVE FEATURE

### Antimicrobial Covers

As standing aids the digestive system and gravity can take it's course, our covers have been designed to wipe clean, they also contain an antimicrobial agent to aid infection control.

## INNOVATIVE FEATURE

### Angle Gauges

Built in angle gauges for frame angle and individual leg abduction - easy to read gauges enable precise positioning and allow for the correct position to be repeatedly achieved.

## INNOVATIVE FEATURE

### Individual Leg Abduction

Standz offers the ability to independently adjust either leg from 0 – 30 degrees of abduction depending on the child's clinical needs. Simply adjusted through a wing knob clamp, this action is quick and simple to adjust for each standing session. An incorporated angle gauge makes it easy to see the degree of abduction for each leg.

## INNOVATIVE FEATURE

### Tray Holder (optional accessory)

This clever accessory offers convenient storage when the tray is not in use.

## INNOVATIVE FEATURE

### Safety Lock

Built in safety lock for frame angle adjustment – Ideal for those busy environments where there is potential for accidental activation of an unlocked mechanism.

## INNOVATIVE FEATURE

### Individual Leg Adjustment

Adjustment for both knee and footplate height – Ideal for accommodating leg length discrepancy. This tool free adjustment can be made in seconds and securely clamps into place using our clever clamping marquee design.



## Standz



### Standz Frame

Comes complete with:

- 4 lockable swivel casters
- Tilt mechanism with foot pedal release and safety lock
- 2 leg posts marked with numbers for easy positioning of leg supports
- 0 – 30 degree independent abduction movement of leg posts
- Individual footplates with plantar and dorsiflexion movement
- Angle gauge to read frame angle – frame angle range of 5 – 90 degrees
- Pelvic support board and cover pad in a choice of four colors
- Trunk support board and cover pad in choice of four colors

In addition to the base you will need to add the following accessories to ensure a minimum safe configuration.

**Prone** – sandals, knee support, pelvic support & trunk support.

**Supine** – sandals, knee support, knee support straps, pelvic support, trunk support & head support.

## Always Configurable Accessories



### Flat Pad Head Support

A simple yet effective head support pad for use in supine for children with reasonable head control. It can also be used in prone to extend the height of the chest pad.

**MH09-XX**  
7"(w) x 2"(d) x 4"(h)



### Multigrip Head Support (supine standing only)

The original and innovative Jenx Multigrip™ head support is available in 3 sizes for all Jenx seating/standing systems.

- 1 Link **MH06** 11½"(w) x 2"(d) x 3½"(h)
- 2 Link **MH0101** 18½"(w) x 2"(d) x 4½"(h)
- 3 Link **MH05** 24"(w) x 2"(d) x 4½"(h)



### Molded PU Head Support

Simple headrest for children who require minimal head support. Comes mounted on a flexible bracket.

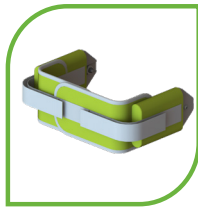
**MH07 XX** 11"(w) x 2½"(d) x 8½"(h)



### Flat Shoulder Support

A simple yet effective wide pad for supporting the shoulders when using Standz in a supine position. Can also be used in conjunction with the **Pelvic Support Board - back pad** in prone.

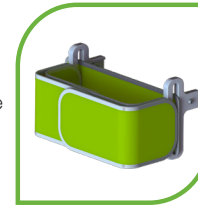
**STZ 014-XX**  
2"(d) x 12"(w) x 3½"(h)



### Lateral Supports with Strap

Firm lateral support pads offer stability to the trunk, pelvis or both together, and the incorporated support strap can be used to facilitate extension or rotation.

**STZ 012-XX**  
5"(d) x 1"(w) x 4"(h)



### Rotation Control Strap

A wide support belt designed to be used to position the pelvis, trunk or both together. Threaded through the support fixings, the strap can be fastened securely around the child and then pulled to facilitate extension or rotation.

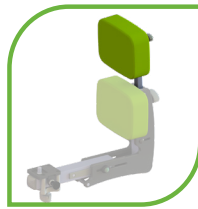
**STZ 013-XX**



### Pelvic Support Board

For use in prone positioning only, the pelvic support board offers a full contact surface to facilitate the full extension of the pelvis and prevent pelvic rotation, pelvic obliquity and unwanted hip flexion.

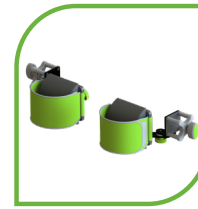
**STZ 015-XX**  
2"(d) x 7½"(w) x 6"(h)



### Pelvic Support Board - Upper Back Pad

Used in conjunction with the pelvic support board, the back pad offers support for the child's upper back. A head support can also be mounted to the back pad to help keep a neutral head position for those children who hyper extend their neck and head when standing in prone.

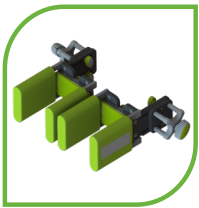
**STZ 016-XX**  
6"(w) x 2"(d) x 6"(h)



### Multi-Axis Knee Supports

Use for supine standing only. For use where there is the need to accommodate fixed knee flexion.

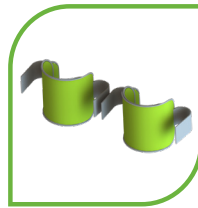
**STZ 017-XX**  
5½"(w) x 4½"(h)



### Standard Knee Support

Individual knee supports offering the ability to accommodate knee flexion when used in supine (requires knee straps when used in supine). Width adjustable to correctly gutter the knee in position.

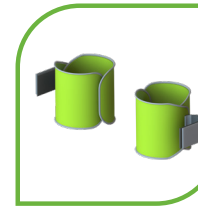
**STZ 007-XX**  
3-4"(w) x 5"(d) x 4½"(h)



### Standard Knee Strap

Intended for use in conjunction with the standard knee supports, the standard knee strap simply holds the knee in the desired position and prevents knee flexion from occurring.

**MU54-XX**



### Rotation Control Knee Straps

Intended for use in conjunction with the standard knee supports, the rotation control straps allow for a cuffing of the child's leg and allow for control of internal or external knee rotation.

**MU45-XX**



### Sandals (Pair)

Available for Standz in either size 1 or 2, these sandals ensure solid foot placement to give the foundation for effective leg positioning and safe standing.

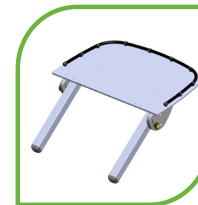
**S16** 4"(w) x 6½"(d)  
**S2** 4½"(w) x 8½"(d)



### Prone Only Tray

Only suitable for when the product is used in the prone configuration to prevent potential clash issues when fully abducting the leg position.

**STZ 019-XX**  
23"(w) x 15"(d)



### Multi-position Tray

Cleverly designed to be used in both prone and supine, the tray is angle adjustable to ensure the correct position in

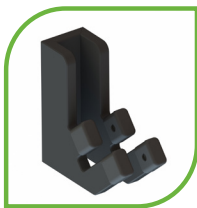
**STZ 008-XX**  
23"(w) x 15"(d)



### Tray Extension Wings

Strongly recommended for use in supine and just as effective when used in prone, these wings attach to the rear of the tray to offer a support surface for the child's elbows and prevents arms from slipping off the tray.

**STZ035**  
6"(w) x 6"(d)



### Tray Holder

A clever accessory that offers a solution of where to store the tray when it is not being used.

**STZ 010**



### Mini Kit

Developed to facilitate standing for smaller children, helping to improve muscle development and weight-bearing through the feet.

**STZ 022**

## Standz Color Range



Pink



Green



Red



Blue

## Standz 1 by Jenx Technical Specification

	Units	Size 1 Prone STZ-BS1	Size 1 Supine MUS01-BS1
Age Range (approx)		6 mths* - 9 yrs	6 mths* - 9 yrs
User Height	inch	21* - 54.3	21* - 54.3
User Weight (max)	lbs	99	99
Chest Width	inch	6.9 - 12	6.9 - 12
Hip Width	inch	6.9 - 12	6.9 - 12
Height (sandal plate to top of upper support board)	inch	22.8 - 39.4	22.8 - 39.4
Height (floor to top of upper support pad, in upright)	inch	42.5	42.5
Height (floor to support board, at horizontal)	inch	N/A	31.9
Kneeblock Width	inch	5.1 - 8.3	5.1 - 8.3
Footplate Angle (dorsi-plantar)	degrees	10° - 25°	25° - 10°
Leg Abduction (each)	degrees	0° - 30°	0° - 30°
Tilt-In-Space Angle	degrees	5° - 90°	5° - 90°
Base Footprint (width x length)	inch	25.4 x 35	25.4 x 35
Overall Weight (approx. range with accessories)	lbs	90 - 110	90 - 110



Prone with tray



Supine with tray



#### EMAIL & WEB:

sales@adaptiveimports.com  
www.adaptiveimports.com

#### PHONE & FAX:

Tel: (877) 767-9462  
Fax: (877) 394-3465

#### ADDRESS:

2760 Circleport Dr.  
Erlanger, KY 41018

distributors of

