

Seating

Standing

Sleeping

Therapy

## Ly-on by Jenx

The ideal platform to build a structured yet safe and comfortable posture for children who have complex postural or medical needs.



### Key features

- Tilt-in-space
- Fold-down sides
- Removable sheet washable at 140°F

Max user height: 63"  
Max user weight: 154 lbs

## Always Supportive...



# Ly-on by Jenx

## Ly-on - Feeding, Access and Education Station

Developed with the aid of therapists and care staff, Jenx are delighted to bring you Ly-on; a real solution to the challenge of positioning children who have complex postural or medical needs. Ly-on offers the ideal platform to build a structured yet safe and comfortable posture quickly and easily with no tools required.

The versatile base offers a wide range of height adjustment and 15° of tilt in either direction to allow for opportunities to change the user's weight distribution to aid in pressure management, receive their enteral feed or for effective positioning to aid therapeutic drainage.

### INNOVATIVE FEATURE

#### Tool Free Adjustments

Ly-on offers the ideal platform to build a structured yet safe and comfortable posture quickly and easily with no tools required.

### INNOVATIVE FEATURE

#### Activity Frame / Tablet Holder

Easily clipped into place, these accessories allow the child using Ly-on to be entertained - especially useful during long periods of lying, such as receiving their enteral feed.

### INNOVATIVE FEATURE

#### Positioning Blocks

Numerous shapes and sizes available to accommodate children with differing postural needs. Can be customized to meet specific needs of a user.

### INNOVATIVE FEATURE

#### Hook Receptive Sheet

Removable and washable at 140°F, this sheet allows precise positioning of various support options. Additional sheets can be purchased for a multi-user environment or where soiling may occur.

### INNOVATIVE FEATURE

#### Fold Down Sides

3 positions selectable, allowing for easy engagement with the child and also making transfers in and out of Ly-on safe and dignified. Also allows the child to easily engage with peers.

### INNOVATIVE FEATURE

#### Height Adjustable Platform

The support platform offers a height range via a hydraulic pump, no need to find a electrical socket or worry about charging batteries.

### INNOVATIVE FEATURE

#### Tilt-in-Space

15° tilt-in-space recline and forward allows for weight distribution to be altered to aid in pressure management. An easy-access cable operated lever on the handle allows the angle of the platform to be changed without having to disturb the user.



## Ly-on



### Ly-on

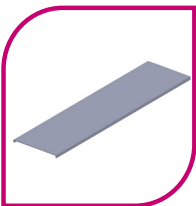
As standard each base comes with:

- 4 breaking casters - one of which is directional lockable
- Hydraulic lift action
- Tilt-in-space mechanism
- Fold-down side rails
- 4 Side Walls in green vinyl - 10" high
- End bumpers in green vinyl
- Memory foam topped lying surface (covered with grey wipe clean PU material)
- 1 Hook Receptive Sheet
- 10 Hook Tabs
- Push handle

**In addition to the base we recommend using at least one positioning strap to ensure the child's safety while using Ly-on.**

**Ly-on is recommended for non-ambulant children and those who have passive movement.**

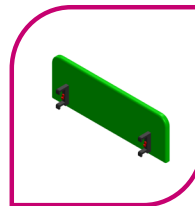
## Always Configurable Accessories



### Additional Hook Receptive Sheet

Quilted for additional comfort and machine washable at 140°F. The Hook Receptive Sheet allows for precise positioning of the support blocks. Advisable to have spare sheets to allow for continued use of the product even after heavy soiling.

**LY01 008**  
68½"(w) x 26"(d)



### Side Walls

Size 1 and size 3 offer an alternative height to the standard size 2 side wall. Consider using the size 3 when positioning a larger user in side lying Side Walls. Available in green vinyl only.

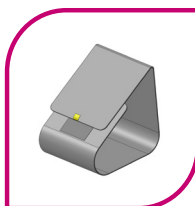
**LY01 005-03** 35"(w) x 8"(d) x 2"(h)  
**LY01 006-03** 36"(w) x 12"(d) x 2"(h)  
**LY01 007-03** 36"(w) x 10"(d) x 2"(h)



### Additional Hook Tabs

Used to secure the Hook Receptive Sheet in place. These tabs are provided in packs of 10.

**LY01 009**  
10"(w) x 1½"(d)



### Side Lying Strap

This strap allows for controlled positioning of the pelvis, trunk or legs. Available in 3 sizes.

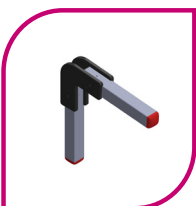
**MU49** 43"(w) x 9"(d)  
**MU52** 50"(w) x 9"(d)  
**MU53** 59"(w) x 9"(d)



### Accessory Mount

Simply clips onto the side bar, this mount is used to receive either Rotation Control Strap Anchor or Activity Frame. Push-button release makes it easy to position this accessory anywhere on the side. Multiple Accessory Mounts can be used at any one time.

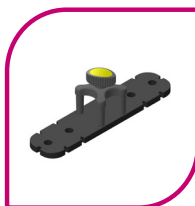
**LY01 014**  
5"(w) x 2½"(d) x 5"(h)



### Activity Frame

Used to support either the Tablet Holder or Tie-on Beam, this accessory allows for the precise positioning of items for the child to engage with. Requires Accessory Mount. Available in 2 sizes.

**LY01 016** 13"(w) x 13"(d) x 2"(h)  
**LY01 010** 22"(w) x 29"(d) x 2"(h)



### Tie-on Beam

An ideal platform to tie toys or items to engage the child's attention while using Ly-on. Requires Activity Frame and Accessory Mount.

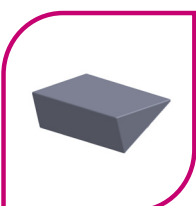
**LY01 011**  
12"(w) x 3"(d) x ½"(h)



### Tablet Holder

This accessory allows for the tablets to be positioned for the child to touch or view - ideal for occupying children while using Ly-on. Requires Activity Frame and Accessory Mount. Designed to support tablets of all sizes.

**STZ 007-XX**



### Triangular Shelf Block

Comes with hook and loop material and creates a level surface to place activities for the child to engage with.

**PB010** 24"(w) x 8"(d) x 5"(h)



### Triangular Positioning Block

Allows positioning and support of the child in numerous positions as required. Available in various sizes.

**PB009** 8"(w) x 10"(d) x 10"(h)

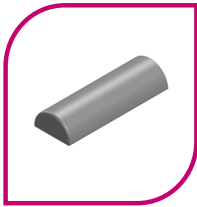


### Bridge Block

Ideal for supporting legs in a side lying position and to create leg abduction. Available in 3 sizes.

**PB003** 8"(w) x 10"(d) x 6"(h)  
**PB004** 8"(w) x 10"(d) x 6"(h)  
**PB001** 8"(w) x 10"(d) x 7"(h)

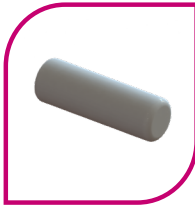
## Accessories continued



### Half Roll Block

Ideal for positioning under the knees while in supine. Memory foam material covered in grey wipe-clean PU. Available in 2 sizes.

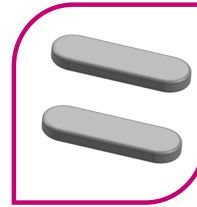
**PB005** 16"(w) x 6"(h)  
**PB006** 16"(w) x 10"(h)



### Roll Pillow

Allows for a neutral head position. Memory foam material covered in grey wipe-clean material.

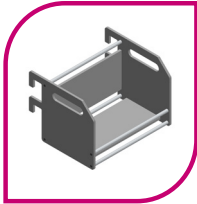
**PB007**  
20"(w) x 6½"(h)



### Flat Oval Pillow

Comes as a pair to aid in correct height setting for a neutral head position. Comes in wipe-clean grey PU material.

**PB002**  
15"(w) x 6"(d) x 1"(h)



### Accessory Box

Safely attaches to the side rails - a useful storage area for items such as ventilators and feeding sets.

**LY01 013**  
14"(w) x 10"(d) x 10"(h)



### Accessory Cart

An ideal way to keep all Ly-on accessories in one safe place. With 4 locking casters and 2 Accessory Mounts as standard, the Accessory Cart can be easily moved around the room.

**LY01 015**  
23"(w) x 20"(d) x 27"(h)

## Ly-on by Jenx Technical Specification

	Units	Ly-on LY01-03
User Height	inch	63
User Weight	lbs	154¼
Support Platform (length x width)	inch	66 x 22
Side Wall Height (3 sizes)	inch	8 / 10 / 12
Tilt-in-Space Angle (recline / forward)	degrees	15° / 15°
Footprint (length x width)	inch	77 x 26¼
Support Platform Height from Floor (min - max)	inch	20½ - 39¾
Weight of Product	lbs	167½



**EMAIL & WEB:**  
sales@adaptiveimports.com  
www.adaptiveimports.com

**PHONE & FAX:**  
Tel: (877) 767-9462  
Fax: (877) 394-3465

**ADDRESS:**  
2760 Circleport Dr.  
Erlanger, KY 41018

distributors of

