

Seating

Standing

Sleeping

Therapy

JENX[®]
Positioning for life



Junior+ by Jenx

A comfortable, contoured and stable modular seating system, designed to suit the needs of children between 18 months and 12 years.

Key features

- Contoured PU seat with removable abduction pad and memory foam seat pad
- Available in 4 different color options
- 4 point lap strap
- Height adjustable PU back pad
- Independently adjustable PU lumbar/sacral pad

Age Range: 18 months to 12 years
Back Angle (recline - forward) : 15° - 15°
Max user weight: 110lbs

Always Supportive...



EMAIL & WEB:

sales@adaptiveimports.com
www.adaptiveimports.com

PHONE & FAX:

Tel: (877) 767-9462
Fax: (877) 394-3465

ADDRESS:

2760 Circleport Dr.
Erlanger, KY 41018

distributors of

JENX[®]
Positioning for life



Junior+ by Jenx

Junior+ is the latest seating system from Jenx, building on the highly popular Junior system and offering increased comfort. The Junior+ offers highly flexible supportive seating for children from 18 months - 12 years.

An outstanding level of versatility is achieved through a wide variety of head, trunk, leg and foot support options meaning each Junior+ can be exactly tailored to the needs of any individual child. The contoured seat unit constructed from super-soft polyurethane and memory foam provides unparalleled comfort and the perfect base for true pelvic stability.

Created in conjunction with children, parents, therapists and care staff, the Junior+ has been thoughtfully and carefully designed to meet a wide range of needs - meaning every child can be comfortable and perfectly supported, allowing them to get on with playing and learning.

Outstanding Pelvic Control System

Contoured seating with memory foam seat pad, independently adjustable lumbar/sacral support and a 4 point lap strap all provided as standard make the Jenx Junior+ outstanding when it comes to pelvic control. Plus if you find this isn't enough, the optional ischial bar will help prevent low tone or very active children from slipping into sacral sitting.

INNOVATIVE FEATURE

Adjustable Back Height

From 12" on the size 1 to 20.5" on the size 3, as your child grows, the Junior+ range grows with them! Plus, you can also add an extra 3" with the back extension post.

INNOVATIVE FEATURE

Shoulder Protractors

Available in different sizes, the shoulder protractors prevent retraction of the shoulder girdle along with the benefit of promoting a mid-line arm position.

INNOVATIVE FEATURE

PU Support Pads

Included as standard for hip support with easy, flip-away action for leg support. All pads are made from super-soft PU - fully flexible, easy to clean and impervious to fluids, making them hygienic and robust.

INNOVATIVE FEATURE

Flexible Thoracic Supports

Designed with comfort in mind these super-flexible thoracics, available in different sizes, hug to provide just the right amount of support without restricting function.

INNOVATIVE FEATURE

Leg Control Pads

Use 2 or 4; these unique leg control pads allow you to control leg position independently of pelvic position, creating abduction or adduction or controlling windsweeping. Simple to adjust, they flip completely out of the way for smooth, safe, dignified and unobstructed transfers.

INNOVATIVE FEATURE

Adjustable Seat Depth

To ensure the fit is exactly right for each child, the seat depth is fully adjustable. This is a tool free, quick and easy to access adjustment.

INNOVATIVE FEATURE

Flip-up Angle Adjustable Footplate

To accommodate or encourage dorsi or plantar flexion. Adjusts quickly and simply with the turn of a button, flips up for safe and easy standing transfers with the footplate held out of the way with a concealed magnet. Now with easy fit slots making attaching sandals and other foot support options a breeze.

INNOVATIVE FEATURE



Base



Y-Base

The most flexible base in the Jenx range, the Y-base offers a huge range of height adjustment from 12"-30" alongside tilt-in-space functionality and lockable, swivel casters. Tilt-in-Space 30° recline, 10° prone.

JM01

Junior+ Seat Unit



Junior+ Seat Unit

Suitable for children from approx 18 months - 12 years across 3 sizes, each Junior+ seat unit provides all the basics for a solid seating foundation, including:

- Contoured PU seat with removable abduction pad and memory foam seat pad
- Adjustable, flip-away PU hip pads
- Angle adjustable & flip-up footplate
- 4 point lap strap
- Height adjustable PU back pad
- Independently adjustable PU lumbar/sacral pad
- Leg control brackets



Multigrip™ Headrest

The original and innovative Jenx Multigrip™ headrest is available in 3 sizes for all Jenx seating systems. Provides adjustment for height, depth and angle.

- 1 Link: **MH06** 11½"(l) x 2¾"(h)
- 2 Link: **MH01-01** 17¾"(l) x 2¾"(h)
- 3 Link: **MH05** 24"(l) x 2¾"(h)



Moulded Head Support

Simple headrest for children who require minimal head support. Comes mounted on a flexible bracket giving adjustment for height, depth and angle.

MH02-05



Adjustable Push Handle

Makes moving equipment safer and easier for carers, flips away in seconds when not in use so ideal for busy classroom environments or where space is at a premium.

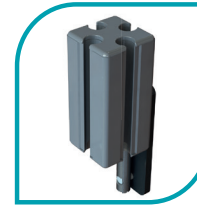
JB07 14¼"(l) x 8¾"(w) x 1½"(d)



Shoulder Protractors

Comfort style shoulder protractors to encourage a functional mid-line hand position and prevent excessive retraction. Completely flip-away when not required.

Size 1: SS01 8½"(l) x 6¼"(w) x 1½"(d)



5 Port Back Extension Port

Gives extra height to the Back Pad, for those who require it.

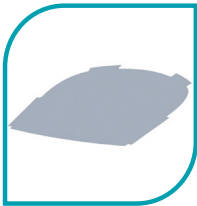
JB18 3¼"(l) x 1½"(w) x 1½"(d)



Tray

A useful surface for work, feeding or play. Made from food grade plastic providing a hygienic and easy to clean surface. Contrasting tray edging gives a definitive boundary.

- Size 1: JT02** 21¼"(l) x 25"(w)
- Size 2: JT03** 23¾"(l) x 26¼"(w)



Clear Tray Overlay

Ideal for use with communication aids, makaton symbols and other teaching/learning aids. Simply sandwich the teaching aid between the tray and clear overlay to provide a protective, waterproof cover.

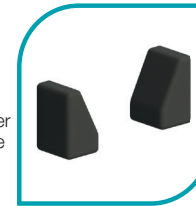
Size 1: PL017 001 20¾"(l) x 14½"(w)



Reduced Cut-Out Tray Infill

Designed to work with the standard Junior+ trays by reducing the aperture for smaller children. Perfect surface for use with suction toys, anchors or grab bars.

- Size 1: PL009 001** 21½"(l) x 24"(w)
- Size 2: PL009 002** 23½"(l) x 24¾"(w)



Tray Elbow Blocks

Used to encourage arms into a mid-line position and/or to block excessive retraction.

JT08 5½"(l) x 4"(w) x 3½"(d)
(Dimensions for each pad)



Activity Frame

Great for encouraging head control and hand/eye coordination. Easy to attach and adjust. Comes with two clips for attaching toys or other items.

GT10 21¼"(l) x 13¾"(w)



Grab Bar

Perfect for children who need to fix one hand to increase functionality.

GT09 21¼"(l) x 3¾"(w) x 2¾"(d)



Armrests

Provided as a pair the armrests are independently adjustable for height and angle. Clear markings make it easy to set the armrests at the correct height. Padded armrest covers in a range of colours are also available.

JT01 12¼"(l) x 2¾"(w) x 12½"(h)



Seat Extension

Provides extra length on one side of the seat for children with leg length discrepancy. **NB.** Cannot be used in conjunction with leg control pads.

JL13 7"(l) x 1½"(w) x 1¾"(d)



Ischial Bar

Simple yet highly effective positioning aid for children with a strong tendency towards sacral sitting. Position beneath the memory foam pad in front of the ischial tuberosities.

JM11 8½"(l) x 2¼"(w) x 1¼"(d)



Waistcoat Harness

Provides additional trunk support to children with low tone. Attach, detach and flip-away in seconds with a single hand – no tools required.

- Size 1: HB01** 11"(l) x 9½"(w)
- Size 2: HB02** 12½"(l) x 11"(w)
- Size 3: HB03** 14½"(l) x 13¾"(w)



Thoracic Support Pads

These flip away flexible and hygienic PU pads are mounted on height and width adjustable brackets (without strap).

Size 2 Short: JB26 6¼"(l) x 4¼"(w) x ¾"(d)



Flexible Thoracic Support Pads

These slimline and super flexible support pads (with straps) are designed to provide outstanding positioning with comfort in mind.

- Size 1 Long: THC02** 7"(l) x 3¼"(w) x ¾"(d)
- Size 2 Standard: THC03** 8¼"(l) x 2¾"(w) x ¾"(d)

Accessories continued



Abduction Blocks

Available in 2 sizes providing different levels of abducted seating.

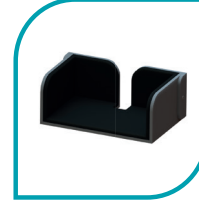
Size 0: GL24
3½"(l) x 3½"(w) x 5¾"(d)
Size 1: GL06
3¼"(l) x 4"(w) x 7"(d)



Leg Control Pads

Unique leg control pads allow you to control leg position independently of pelvic position, creating abduction or adduction or controlling windsweeping.

MSL08 5"(l) x 3"(w)



Box Style Footplate

Perfect for children whose condition precludes them from having their feet fixed. Provides a level of control while still allowing freedom of movement.

GL41 9¾"(l) x 16½"(w) x 6¼"(d)



Additional Footplates & Brackets

Provides support for feet. 3 different sizes of bracket allow for different leg lengths.

5" Bracket: JL14
2½" Bracket: JL15
1¼" Bracket: JL16



Footplate Pad

Attach to the footplate to give a softer surface for children who don't need or can't tolerate more structured foot positioning.

S7 9¾"(l) x 15¾"(w) x 1½"(d)



Sandals

Available in 4 different sizes to accommodate any size of foot, even when wearing splints, Jenx sandals are interchangeable across the entire range of Jenx seating and standing products.

Size 1: S16 3¼"(w) x 6¾"(d)
Size 2: S2 3¾"(w) x 8½"(d)
Size 3: S3 10¾"(d) x 4¼"(w)



Sandals with Ankle Snugs

An optional foot positioning accessory to the standard sandal. The sandals with Ankle Snug offers a unique magnetic buckle fastening mechanism, which can be operated single handed.

Size 1: S19
Size 2: S21



Booties

Available for the smallest Jenx seating systems, booties provide gentle and comfortable support for tiny feet even without shoes. They are soft and extra padded with no fiddly straps, press studs or buckles.

S5 3½"(w) x 2¾"(h) x 5½"(d)



Sandal Raising Blocks

Available for every size of Jenx sandals, the raising block kits give the sandals that extra bit of height where needed! Use to accommodate for leg length discrepancy or use to raise the height of the footplate on any product to maximize the available growth. Each block adds 0.7" to the sandal.

NB: One kit needed per individual sandal.

Size 1: SRB1 3¼"(w) x 6¾"(d)
Size 2: SRB2 3¾"(w) x 8½"(d)
Size 3: SRB3 10¾"(d) x 4¼"(w)

Junior+ by Jenx Technical Specification

IMPORTANT INFORMATION:

Please be aware, some minimum and maximum measurements are achieved by the use of additional accessory components.

	Units	Junior+ 1 JUC21	Junior+ 2 JUC22	Junior+ 3 JUC23
Age Range (approx)	mo - yrs	18 mo - 5 yrs	3 yrs - 8 yrs	5 yrs - 12 yrs
User Weight (max)	lbs	110	110	110
Back Angle (recline - forward)	degrees	15° - 15°	15° - 15°	15° - 15°
Back Pad Height from Seat to Top (min - max)	inch	12 - 16	13 - 17	15½ - 20½
Chest Width (min - max)	inch	7¼ - 11	7¼ - 11	8¼ - 12
Hip Width (min - max)	inch	6 - 14¾	6 - 14¾	6 - 14¾
Seat Depth (min - max)	inch	8¼ - 12	9¼ - 12½	10¾ - 15¼
Lower Leg Length (min - max)	inch	7½ - 10½	9¾ - 14¼	9¾ - 16
Footplate Angle (dorsi - plantar)	degrees	5° - 35°	5° - 35°	5° - 35°
Y Base Tilt-In Space Angle (posterior - anterior)	degrees	30° - 10°	30° - 10°	30° - 10°
Y Base Footprint (width x length)	inch	25½ - 30½	25½ - 30½	25½ - 30½
Y Base Seat Height From Floor (min - max)	inch	11 - 30	13 - 30	14¼ - 30



EMAIL & WEB:

sales@adaptiveimports.com
www.adaptiveimports.com

PHONE & FAX:

Tel: (877) 767-9462
Fax: (877) 394-3465

ADDRESS:

2760 Circleport Dr.
Erlanger, KY 41018

distributors of

